

997 Lower Shock Mount Sealed Monoball Kit - Installation Instructions

Part # 2260023

Cars applicable:

997

Parts list:

Quantity	Description
2	Rear Shock Lower Monoball Cartridge
1	Bearing Retainer Packet
2	Beveled Snap ring



Tools Required:

- Elephant Racing bushing removal tool (P/N: 2260024) – Recommended.
- Arbor or hydraulic press (alternative option).
- Solvent (aerosol brake cleaner or similar).

Introduction –

Congratulations on your selection of the Elephant Racing 997 Rear Shock Lower Sealed Monoball Kit. These cartridges replace compliant factory rubber bushings with hardened-steel spherical bearings. Compliant bushings act as a spring in series with the shock, thus reducing the overall effectiveness of the suspension and leading to undesirable handling characteristics.

Our fully sealed monoball cartridge kits feature maintenance free PTFE linings requiring no supplemental lubrication. We've designed in weather seals to keep dirt out and extend product life.

Step-by-Step Installation

The installation of this part can be accomplished with, or without the recommended Elephant Racing removal and installation tool. The tool enables you to avoid the removal of the wheel carrier from the car and to ensure quick and easy removal and installation of the bushing while minimizing any risk of damage. Doing so makes it faster and easier.

With Elephant Racing Removal/Installation Tool (P/N: 2260024)

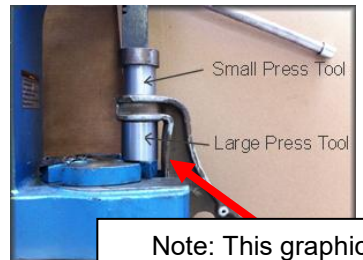
1 – Remove the shock from the car. See an appropriate shop manual.

2 - Use the **Elephant Racing Bushing Removal Tool** to press out the factory bushing. Refer to the instructions included with the bushing removal tool **2260024**.



Lower Shock Mount Bushing Location

2B – If you don't have the **Elephant Racing Bushing Removal Tool**: Remove the wheel carrier from the car (refer to an appropriate manual). Use a press to press the bushing out. Focus the force on the outer bushing sleeve using a cylindrical press tool. Support the wheel upright using a larger cylindrical press tool as shown.



Note: This graphic is meant as a representation only and does not depict the actual parts

3 - Thoroughly clean the bushing bore with solvent, removing all oil/grease and dirt in preparation for the Retaining Compound. (Use provided retainer compound instructions).



4 – Align the monoball cartridge: Notice that the area of the wheel carrier where the bushing is installed has an angle shape, the sides are not parallel. The cartridge has mating angles to fit this (figure 4) and two marks for reference on the flange used for aligning the mating angles (figure 1).



FIGURE 1

The marks are going to be aligned with the center of the sway bar nut for reference (figure 2 red arrow).

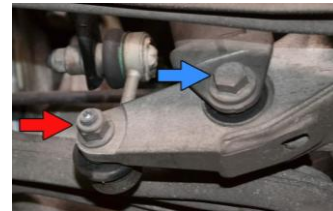


FIGURE 2

The CAD Model shows this better with the two marks on the flange of the cartridge aligned with the sway bar hole (figure 3).

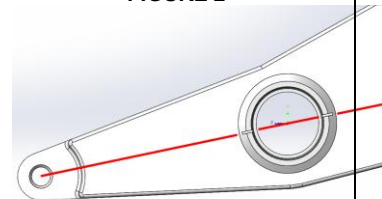


FIGURE 3

5 – Installation: Once the cartridge is aligned use the **Elephant Racing Tool** to insert the cartridge in the wheel carrier.

If you don't have the **Elephant Racing Bushing Removal Tool** use the press.

Press the cartridge into place with the tool from the rear the car. The side with the flange will end located on the rear side of the car. Fully seat the cartridge with flange contacting the upright, ensuring the proper contact between the angled faces (figure 4).

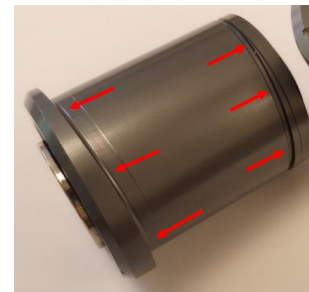
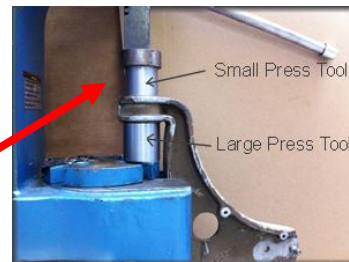


FIGURE 4

Note: Do not press on the center bearing spacer. Doing so will damage the bearing. Instead, press only on the surface of the monoball housing.

Note: This graphic is meant as a representation only and does not depict the actual parts

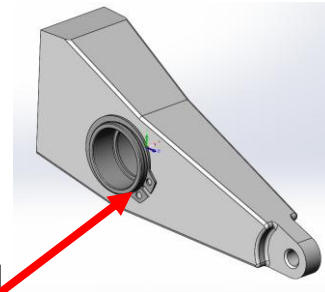


6 - Secure the cartridge with the provided **snap ring** (figure 5). Ensure it seat properly in the ring groove



FIGURE 5

It is recommended to place the snap-ring **ears** in the thickest edge of the cartridge as shown in figure 6.



Best position for snap-ring

FIGURE 6

7 - If you don't have the Elephant Racing Bushing Removal Tool, re Install wheel carriers on the vehicle. Refer to a shop manual.

Re-install the shock.